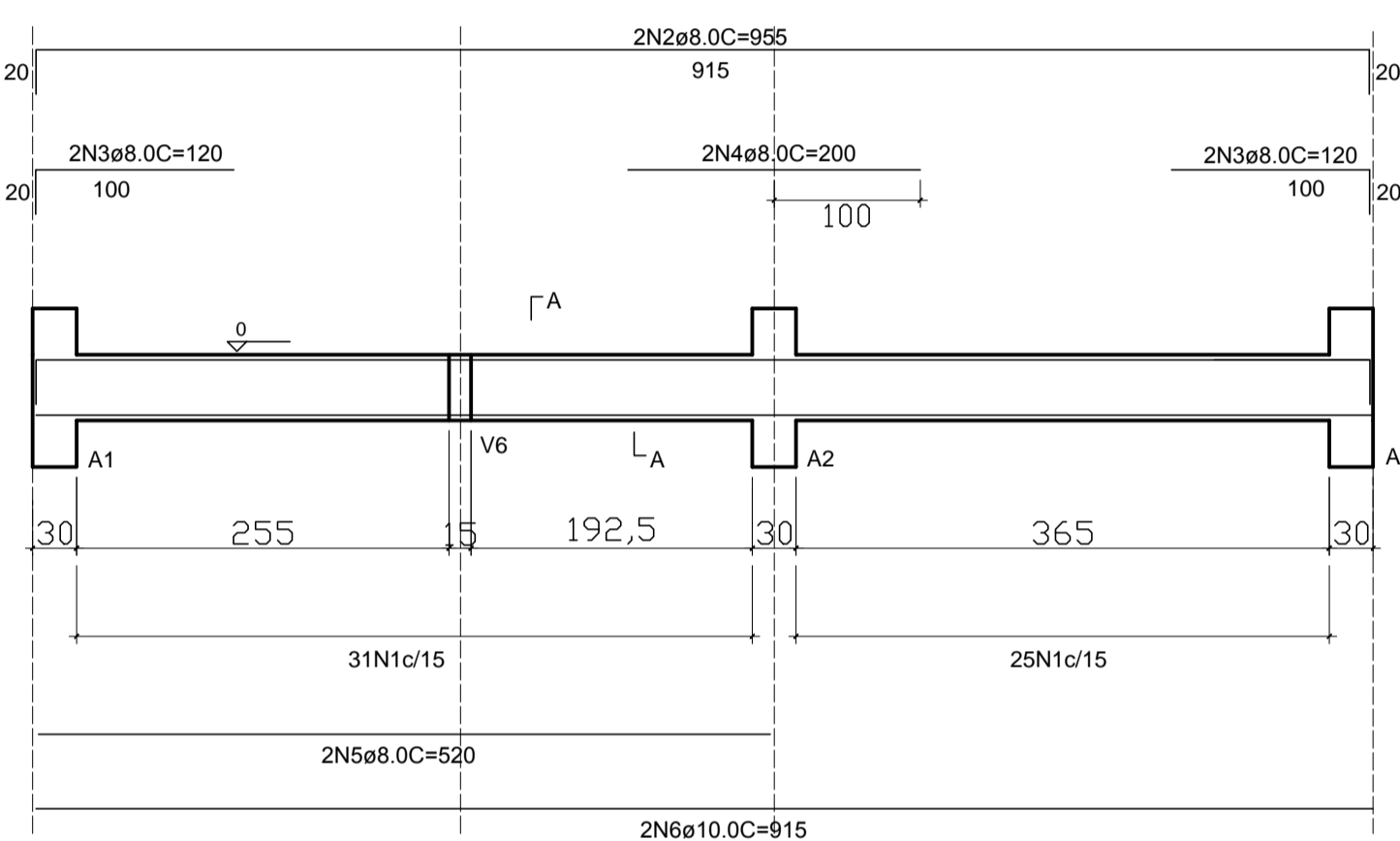
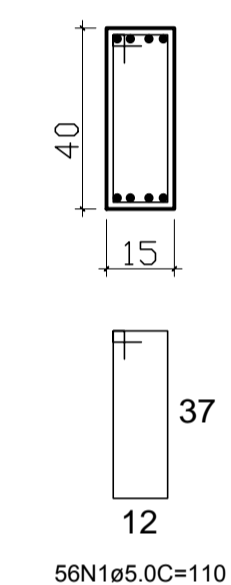


Forma do pavimento Nivel 000
escala 1:50

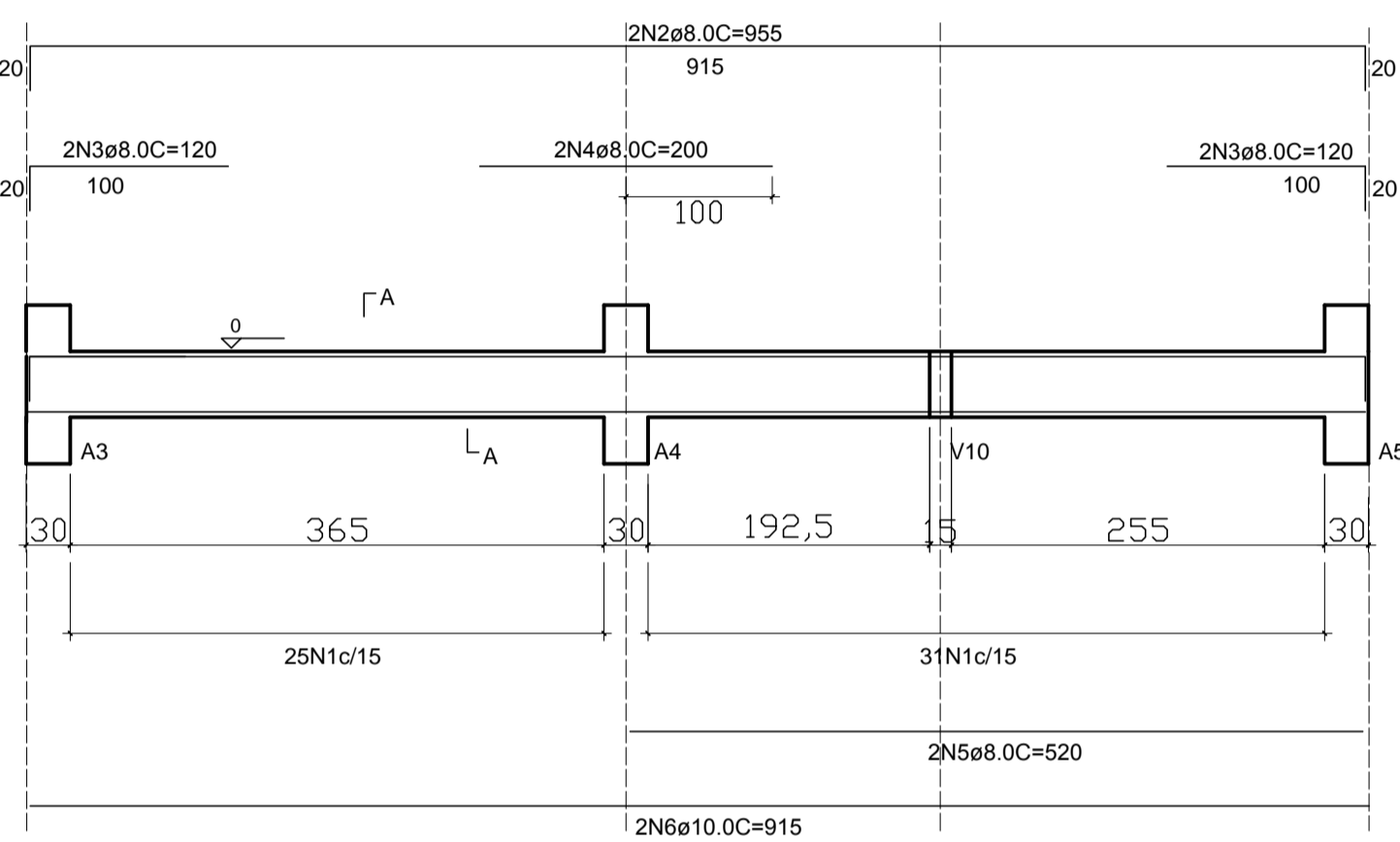
V01
ESC 1:50



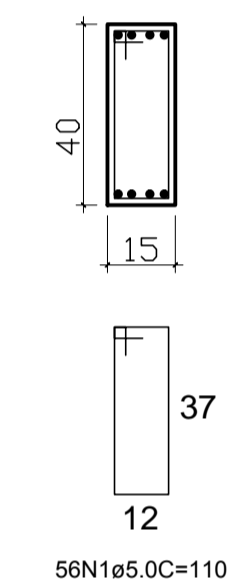
SEÇÃO A-A
ESC 1:25



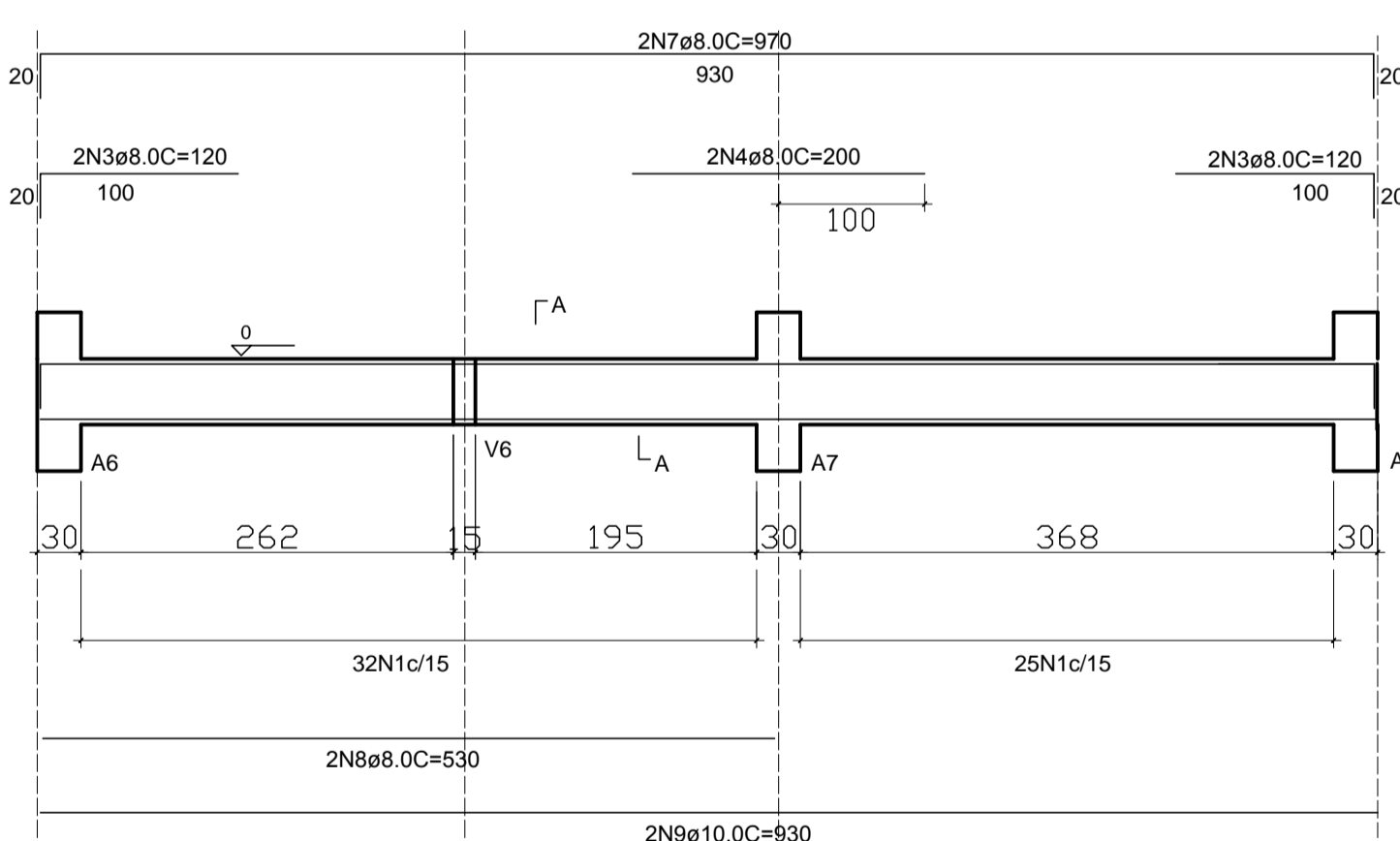
V02
ESC 1:50



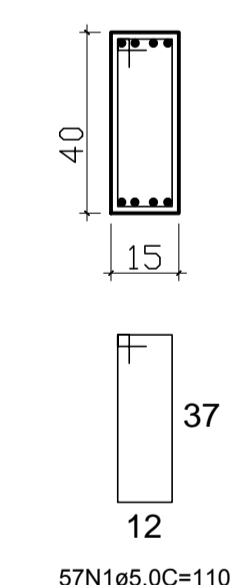
SEÇÃO A-A
ESC 1:25



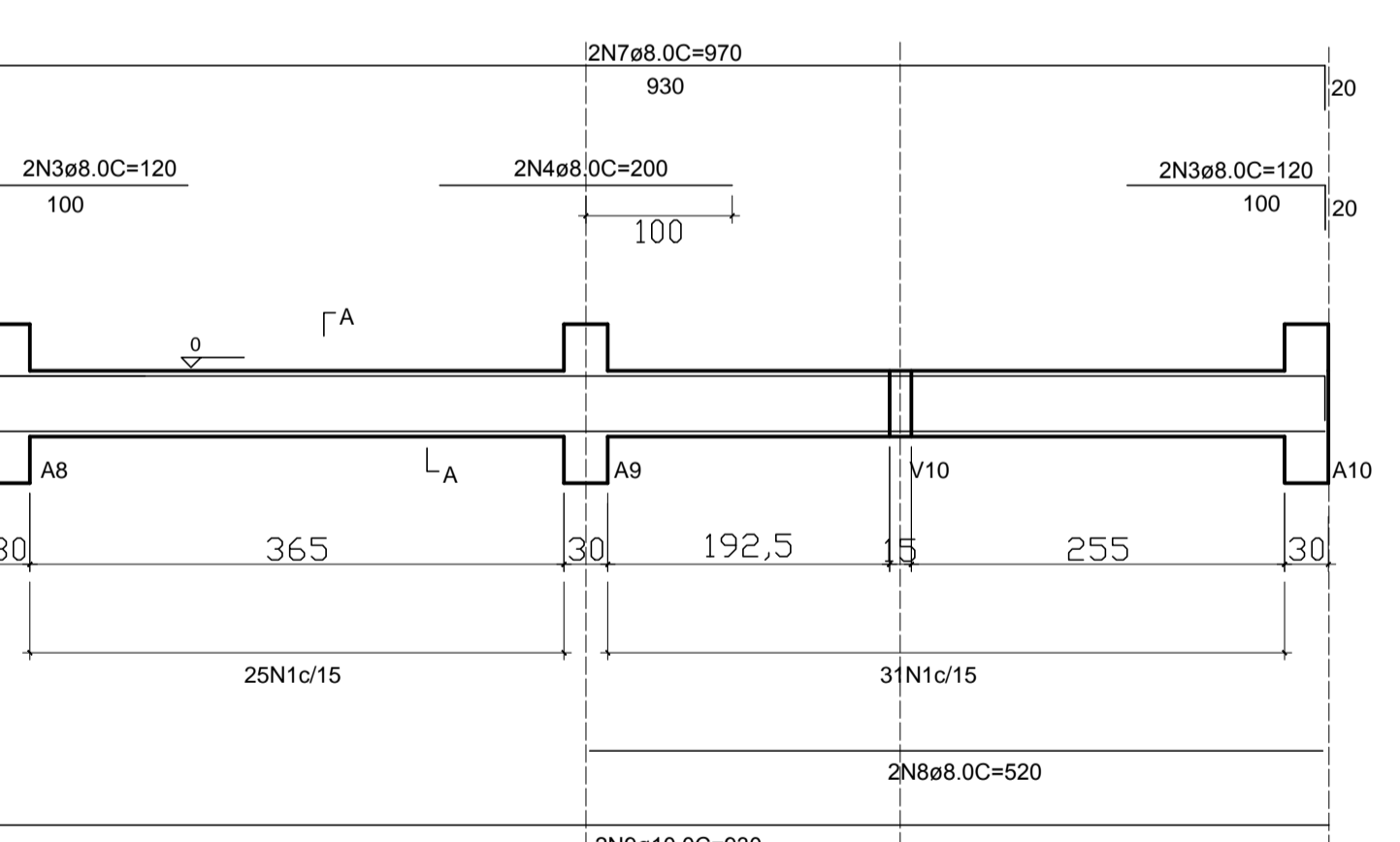
V03
ESC 1:50



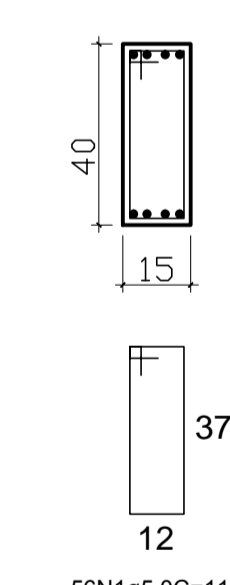
SEÇÃO A-A
ESC 1:25



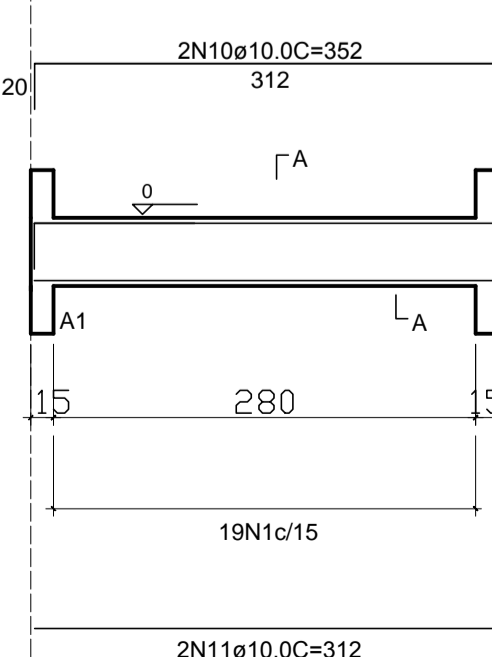
V04
ESC 1:50



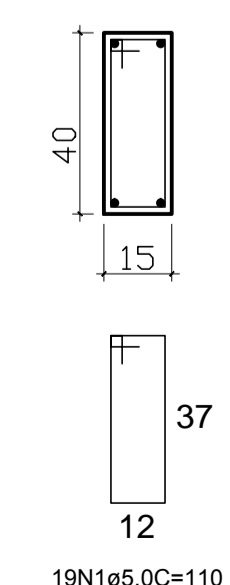
SEÇÃO A-A
ESC 1:25



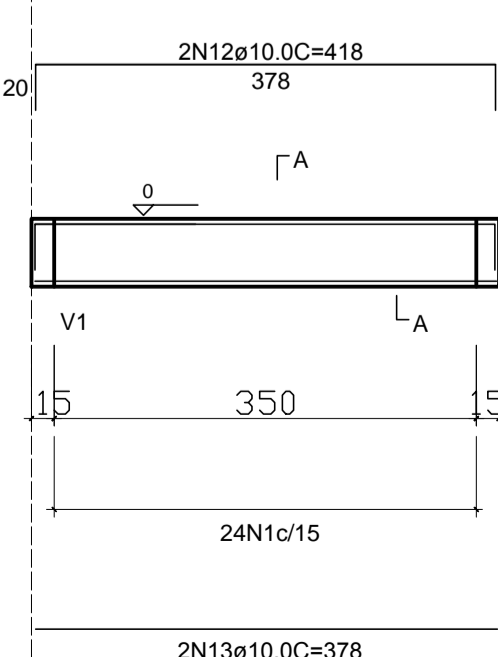
V05
ESC 1:50



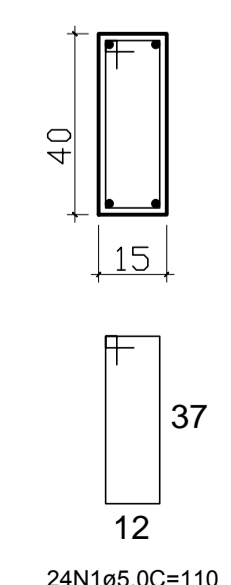
SEÇÃO A-A
ESC 1:25



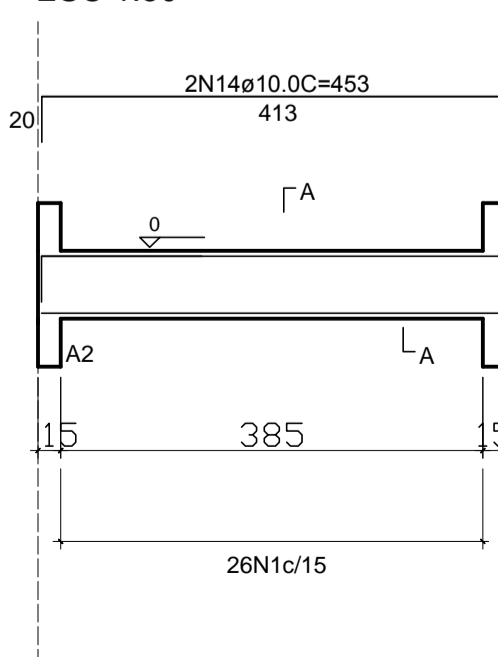
V06
ESC 1:50



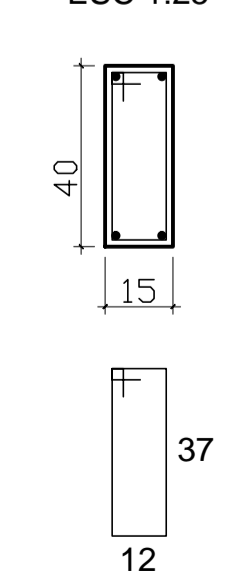
SEÇÃO A-A
ESC 1:25



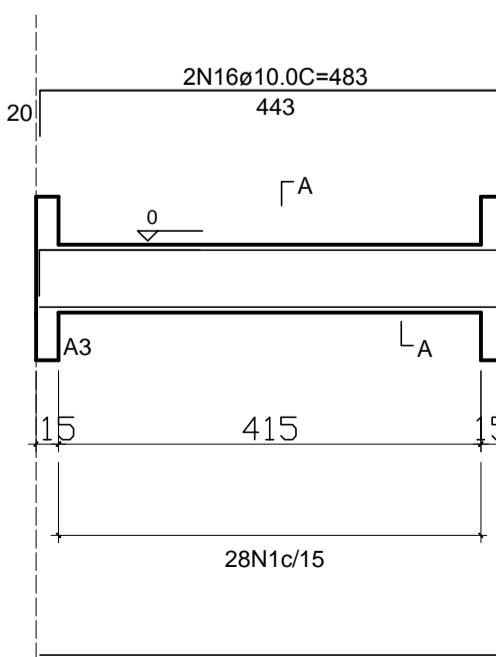
V07
ESC 1:50



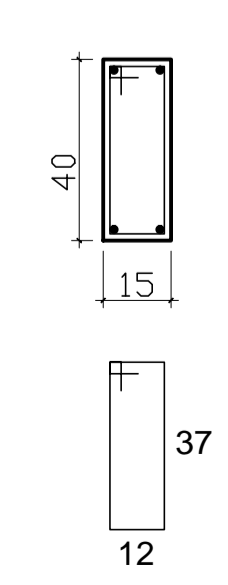
SEÇÃO A-A
ESC 1:25



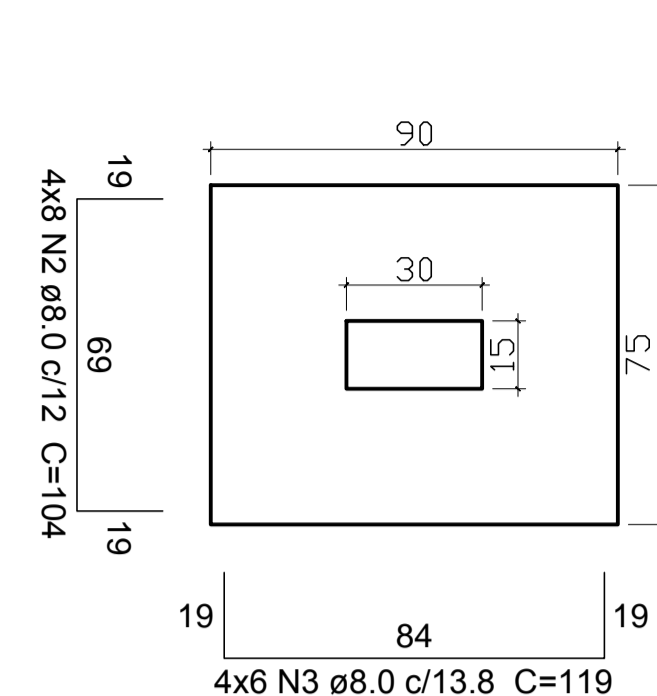
V08
ESC 1:50



SEÇÃO A-A
ESC 1:25

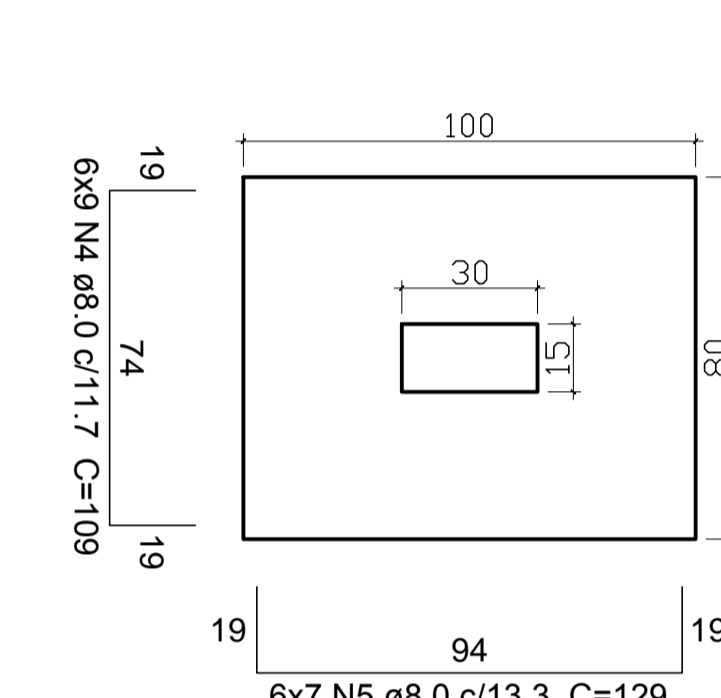


S1=S5=S6=S10
PLANTA
ESC 1:25



Solo compactado sobre a sapata
peso específico > 1600.00 kgf/m³

S2=S3=S4=S7=S8=S9
PLANTA
ESC 1:25



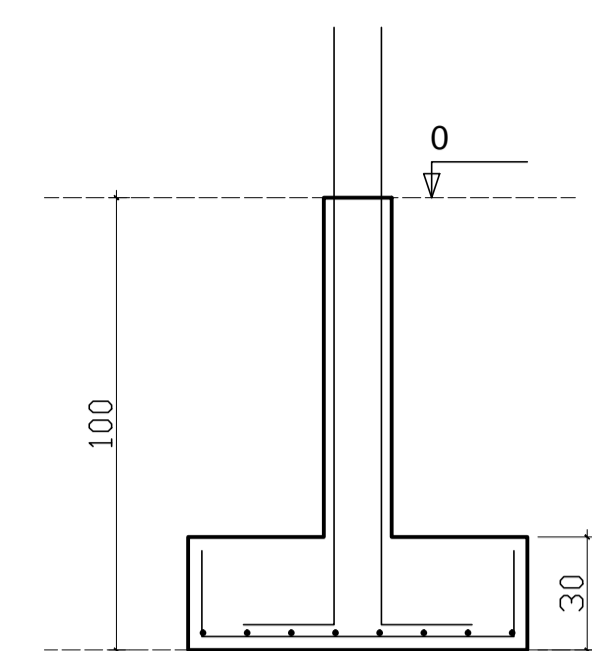
Solo compactado sobre a sapata
peso específico > 1600.00 kgf/m³

Características dos materiais

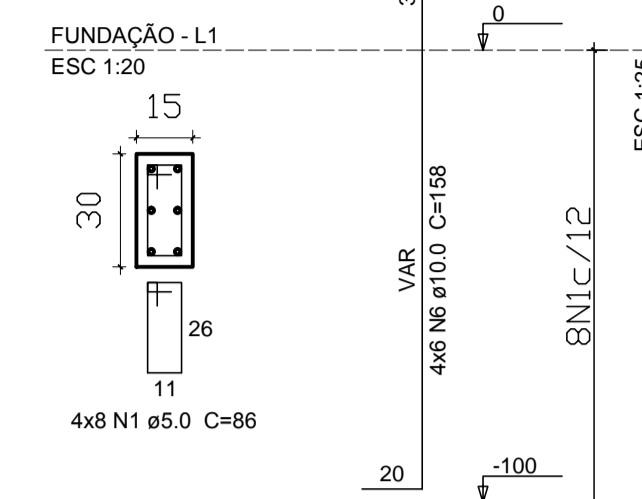
fck (kgf/cm²)	Ecs (kgf/cm²)
250	241500

Dimensão máxima do agregado = 19 mm

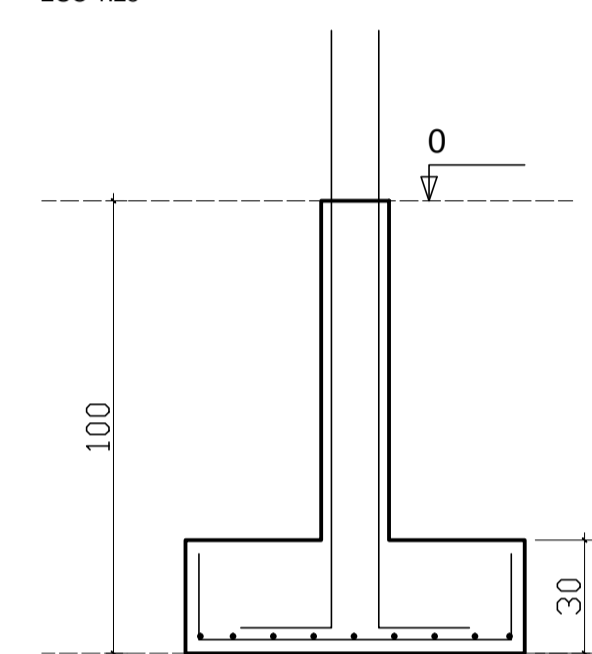
CORTE
ESC 1:25



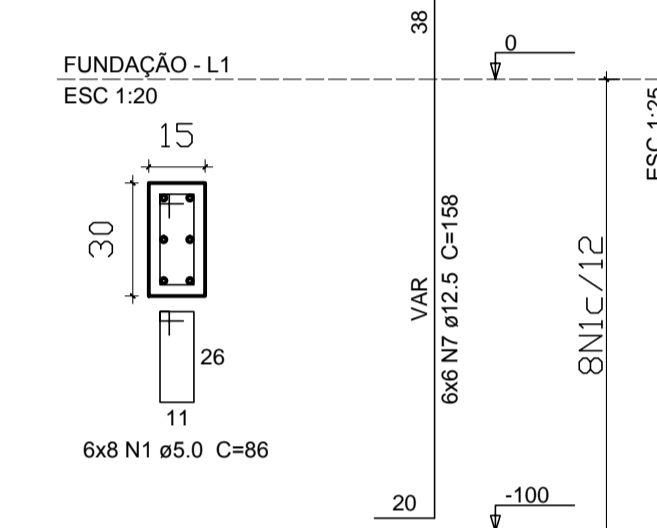
A1=A5=A6=A10



CORTE
ESC 1:25



A2=A3=A4=A7=A8=A9



Relação do aço

S1	S2	S3
S4	S5	S6
S7	S8	S9
S10	A1	A2
A3	A4	A5
A6	A7	A8
A9	A10	

AÇO	N	DIAM (mm)	QUANT	C.UNIT (cm)	C.TOTAL (cm)
CA60	1	5.0	80	86	6880
	2	8.0	32	104	3328
	3	8.0	24	119	2856
CA50	4	8.0	54	109	5886
	5	8.0	42	129	5418
	6	10.0	24	158	3792
	7	12.5	36	158	5688

Resumo do aço

AÇO	DIAM (mm)	C.TOTAL (m)	PESO (kg)
CA50	8.0	174.9	68.21
	10.0	37.9	23.50
	12.5	56.9	56.33
CA60	5.0	68.8	11.01
PESO TOTAL (kg)			
CA50		148.04	
CA60		11.01	

Volume de concreto (C-25) = 2.25 m³
Área de forma = 16,74 m²

Contrato OGU: 1.037.928-79	ART nº: 4.777.477
TÍTULO PROJETO: PROJETO ESTRUTURAL	
REFORMA E ADEQUAÇÃO DO GINÁSIO POLIESPORTIVO	
ENDEREÇO: AVENIDA VITAL VIEIRA - CENTRO - INDAIABIRA MG	
RESPONSÁVEL TÉCNICO: PREFEITURA MUNICIPAL DE INDAIABIRA MG CNPJ: 01.614.599/0001-16	
RESPONSÁVEL TÉCNICO: ANTÔNIO COELHO CAMPOS - CREA/MG 55.434/D	
CONTEÚDO: PLANTA FORMA FUNDAÇÃO DETALHES ARRANQUES DETALHES VIGAS BALDRAMES	ESCALAS: INDICADAS FOLHA: 01/03 DATA: 20/07/2018
ÁREA TERRENO: 2016,00 M²	ÁREA EXISTENTE: 709,34 M²
ÁREA ADEQUAÇÃO: 78,12 M²	ÁREA TOTAL: 787,46 M²